



ADTRAN  
**bluesocket**<sup>®</sup>  
 vWLAN<sup>™</sup>

vmware  
 READY

**100% Wi-Fi<sup>®</sup>**  
 CLOUD-BASED AWESOMENESS

Is your company seeing a mass influx of laptops, smart-phones, tablets, and other wireless devices.

You're not alone. Research shows the average person carries three wireless devices. With Adtran's virtual wireless LAN you can scale and innovate without adding expensive controller devices.

You need to scale your network to accommodate bandwidth hungry applications, get greater coverage, higher throughput, accommodate more users for wider mobility while keeping capital and operational expenditures to a minimum.



**FREE!**

30 day hosted evaluation!  
 Contact your iComm sales representative to start today!



Adtran and Blue Socket are available on State contract T600

Integrated Communications, Inc

19387 Nuclear Plant Road  
 Tanner, Alabama 35671

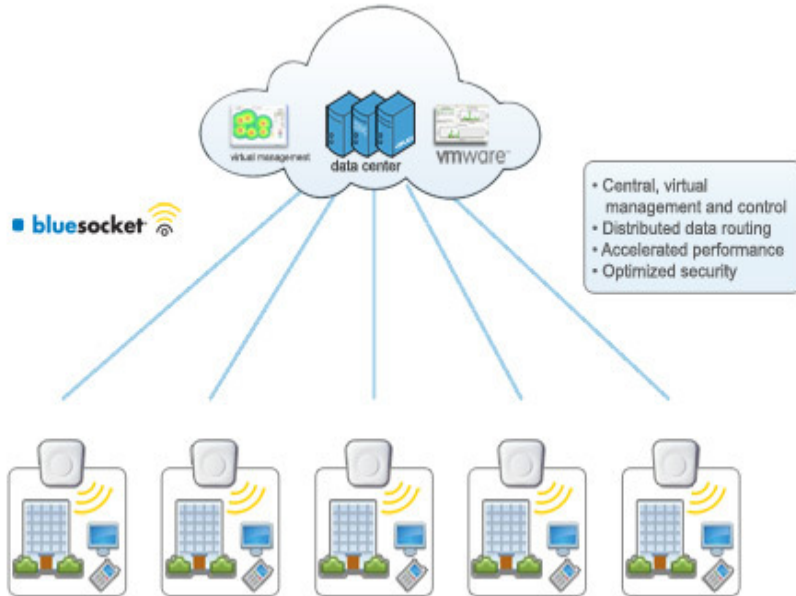
Phone: 256-216-5655

Fax: 256-429-3318

E-mail: [sales@icommonline.com](mailto:sales@icommonline.com)



## Virtual Wireless LAN (vWLAN®)



### Cutting edge management console

vWLAN integrates Bluesocket's WLAN management software to provide a rich set of visual tools for analyzing and troubleshooting the wireless network. The management solution includes location and heat maps, health summary, enhanced reporting, notifications, and summary of the overall RF environment.

### Integrated security:

Identity-based QoS and Fairness Algorithms are applied at the access point. Tightly integrated security modules offer robust and scalable NAC, Guest Access, AAA and WIDS capability.

### Additional security at the edge:

With vWLAN, as user's role is determined by his or her identity. User roles are managed by the central control software but are enforced by the AP. The roles contain multiple attributes including service policies, VLAN/subnet assignment, bandwidth, and QoS. A single SSID can be used to support multiple roles, eliminating the need to manage multiple SSIDs.

### Increased Capacity:

By forwarding data traffic directly to the access point you free enormous capacity within the wireless controller. More capacity means vWLAN can deliver enhanced wireless management.

### Reduction in Controller Hardware:

The uniquely distributed architecture supports decisions at the edge of the network and manages them centrally. By forwarding data traffic directly to the access point you eliminate the need for costly controller hardware. By removing hardware from the equation both CapEx and OpEx are reduced and scale is cheaper and faster. In large and broad deployments the cost saving is significant.

### Scalability to additional users and software without building out infrastructure:

The Bluesocket vWLAN® distributed architecture enables over a 10x increase in the total traffic. Because the packet forwarding functionality is offloaded from the controller to the access point, the controller is free to now manage thousands of AP's and 10s of thousands of users.